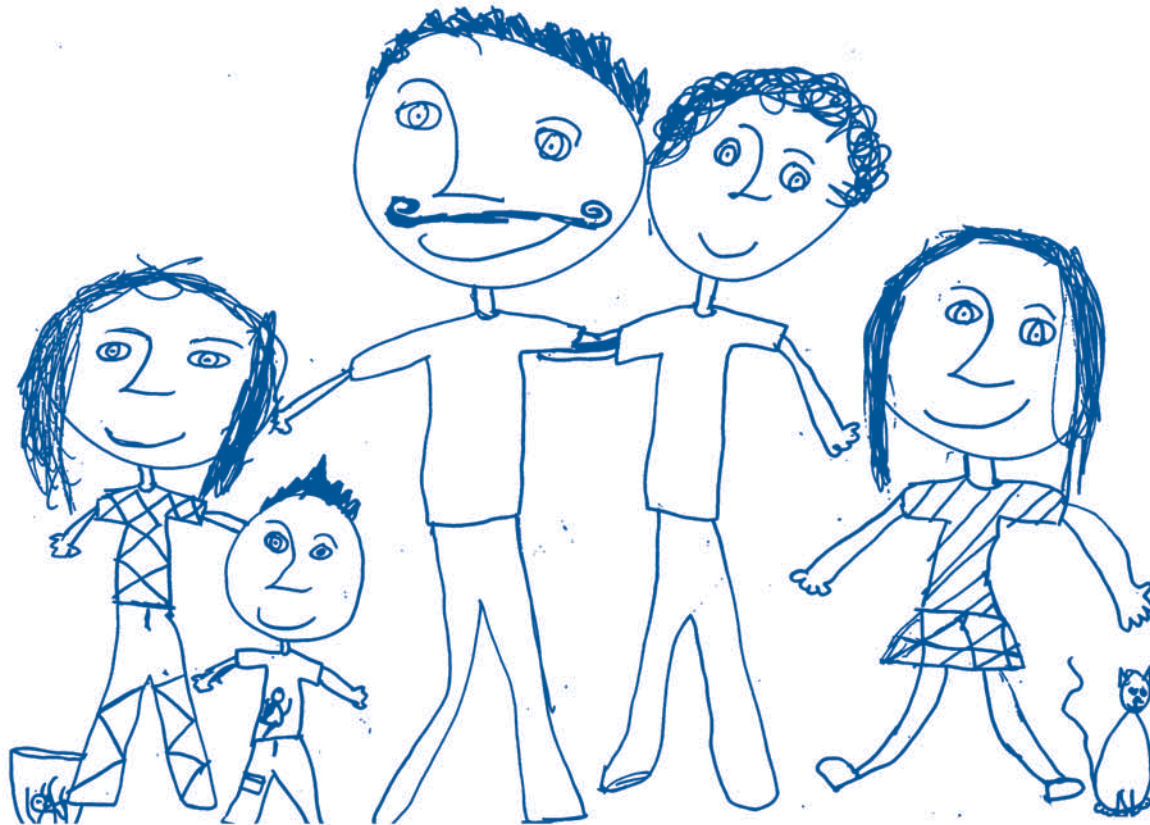
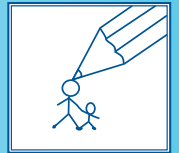


# Parent Partnership

Service



The Parent Partnership Service covers the whole of the county. It provides a free, confidential and impartial service for parents and carers of children with special educational needs.

## Parent Partnership website is coming soon

The Parent Partnership website will soon be ready! You will be able to easily find information, including contact details, leaflets, details of events and links to other web pages. There will be a message board for us to publicise events organized by local groups and services, so if you have things coming up, please let us know. The web address is [www.bedfordshireparentpartnership.co.uk](http://www.bedfordshireparentpartnership.co.uk).

## In this issue

Local Parent Forums	2
The Common Assessment Framework	2
Bedfordshire and District Cerebral Palsy Society	3
Scope Response Service	3

## Local Parent Forums

The Parent Partnership Local Parent Forums have taken place this term already at three venues in the county. The next forums in the summer term are from 10.00 am until 12 noon on the following dates and at the following places:

**Tuesday 15 April at Priory Methodist Church, 63 Newnham Avenue, Bedford**

**Friday 25 April at The Rectory Room, St Swithun C of E Church, High Street, Sandy**

**Monday 28 April at Leighton Buzzard Library, Lake Street, Leighton Buzzard**

Any parent or carer of children with special educational needs is welcome. Just turn up or 'phone the Parent Partnership for more information.

The forums are not suitable for discussing concerns about individual children – if you would like to do this, please phone the helpline on 01234 316353

We are very pleased that parents have been invited to Local Authority discussions on various issues, as a result of issues raised at Local Parent Forums. They have been part of a focus group, run by Young Voice, to look at guidance the DCSF has produced for schools on bullying and disabled children and those with SEN. Parents have looked at the guidance for School Action and Action Plus and for Early Years, and will also contribute to sections in the SENCo manual about successful working with parents.

Julia Overton has been given the job of Anti-Bullying Co-ordinator in Bedfordshire and recently visited our offices. She brought with her details of Mencap's campaign, 'Don't stick it'. We have fliers advertising this campaign and can send them to anyone who is interested and does not have access to the internet. If you have access to the internet, we would recommend you look at the website, [www.dontstickit.org.uk](http://www.dontstickit.org.uk) for some useful information.

## The Common Assessment Framework

We often give advice to parents about early intervention services in Bedfordshire, so thought it would be useful to include some information about current ways to support children, young people and families through a range of services. It is quite common for us at Parent Partnership to talk to parents who are asking questions about some of the following early interventions, usually because various services are supporting them.

A document produced by the Children and Young People's Strategic Partnership explains that 'In Bedfordshire, the three key processes that are in place to promote early intervention are the Common Assessment Framework (CAF); the Lead Professional and the Multi-Agency Allocation Groups (MAAG). There are also panels in place that meet the more complex levels of need – Bedfordshire Allocation Panel (BAP) and Joint Agency Panel (JAP). These two panels allocate intensive family support and specialist residential care provision.



### Asperger's...

#### What Does It Mean To Me?

A parent has recommended the above workbook, 'What does it mean to me?' by Catherine Foherty. The following review says, 'This book is a workbook explaining self awareness and life lessons to the child or youth with High Functioning Autism or Aspergers. There are many professionals who speak and write on the subject, however, the "real" experts are those who live with the challenge every day. This workbook offers children and youth an opportunity to understand themselves in a positive encouraging way.'

The workbook is also recommended by the Bedfordshire advisory teachers for autism and can be used as a learning tool by parents and school.

The workbook's ISBN number is 188547759 – 7 and is available from Amazon.

'The Common Assessment Framework is part of the Every Child Matters agenda. It is an assessment that enables professionals and the family to: share knowledge of a child and a family; identify areas of need and strength in the family; agree on any desired outcomes; appoint a Lead Professional.

'A Lead Professional may be appointed when more than one service is working with a family. This person will be from the network of professionals already working with the family and they will be responsible for liaising with colleagues supporting a family, for coordinating services to this family, helping the family understanding the services, and even advocating on their behalf.'

The MAAG is a group of professionals who meet to discuss and decide on the best services to help young people and their families. A family's case can be brought to the MAAG by using the CAF or the multi-agency referral form. The MAAGs meet every fortnight in the south, the north and the middle of the county.

### Bedfordshire and District Cerebral Palsy Society

Bedford and District Cerebral Palsy Society is a small local organisation that supports people with Cerebral Palsy and associated disabilities their families and carers throughout North and Mid Bedfordshire. The society runs a number of projects including: an information helpline, regular newsletters, parent/carer support groups, parent advocacy, holiday and activity clubs and voluntary opportunities.

It also considers grants to individuals for short breaks, specialist holidays or equipment.

If you would like to know more about any of the services or would like to become a member (membership is free) contact the team on

**01234 351759**

Young people enjoying the BDCPS Theatre Project

### Scope Response service

I would like to introduce myself to you all, my name is Delia Baylie, I am the Scope Regional Response Worker for the Central and East of England. Scope is the national disability charity for people with cerebral palsy and associated disabilities. Scope services include early years, education, independent living and employment opportunities for disabled people.

Scope Response – 0808 800 3333 - is a free and confidential information, advice and support service for all disabled people and their families. It is the first contact point for all enquiries about Scope, cerebral palsy and disability issues.

As a Scope Regional Response Worker I work specifically with children and adults with cerebral palsy, their families and carers. Assisting and supporting in accessing any services or information they may need in their everyday lives. I can arrange a home visit, if this is required, for any family with a newly diagnosed child with cerebral palsy.

If you would like to contact me please call:

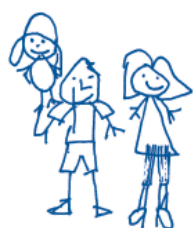
**Tel:** 0808 800 3333 (free phone)  
Open: 9am – 7pm weekdays  
10am – 2pm Saturdays

**Closed:** Sundays & Bank Holidays  
Messages can be left outside these hours

**Email:** [response@scope.org.uk](mailto:response@scope.org.uk)  
**Web:** [www.scope.org.uk/response](http://www.scope.org.uk/response)  
**Text:** SCOPE and message to 80039  
(max 160 characters)

**Address:** Scope Response  
PO Box 833, Milton Keynes, MK12 5NY  
(please enclose a SAE)





You can download Parent Partnership Service information, including past newsletters and information leaflets from

the [www.bedfordshire.gov.uk](http://www.bedfordshire.gov.uk) site. You will need to select the letter P from the A-Z menu on the home page. Then select Parent Partnership from the list.

## What are you doing this summer?



### Do you want to gain experience and new skills?

We have summer positions available working with children who have Autistic Spectrum Disorder

We are looking for experienced

### KEYWORKERS

Must have patience and empathy for children with SEN!

**KEYWORKERS** pay starts at **£6.05 per hour**

We are also looking for **VOLUNTEERS**

Must be playful and fun loving

We give **VOLUNTEERS** expenses

We have schemes at:

### ST JOHN'S SCHOOL, KEMPSTON

From

**Monday 21st July until  
Friday 8th August 2008**

### ROTHESAY NURSERY, LUTON

From

**Monday 28th July until Friday 15th August  
2008**

We will also be running youth schemes and will need Keyworkers, Volunteers and MIDAS trained mini-bus drivers. Call us for more details

Join us for 1 or more weeks

Email: [autismbeds@btconnect.com](mailto:autismbeds@btconnect.com)  
or contact the office **01234 350704**

please quote ref: 'BPP' for an application pack